

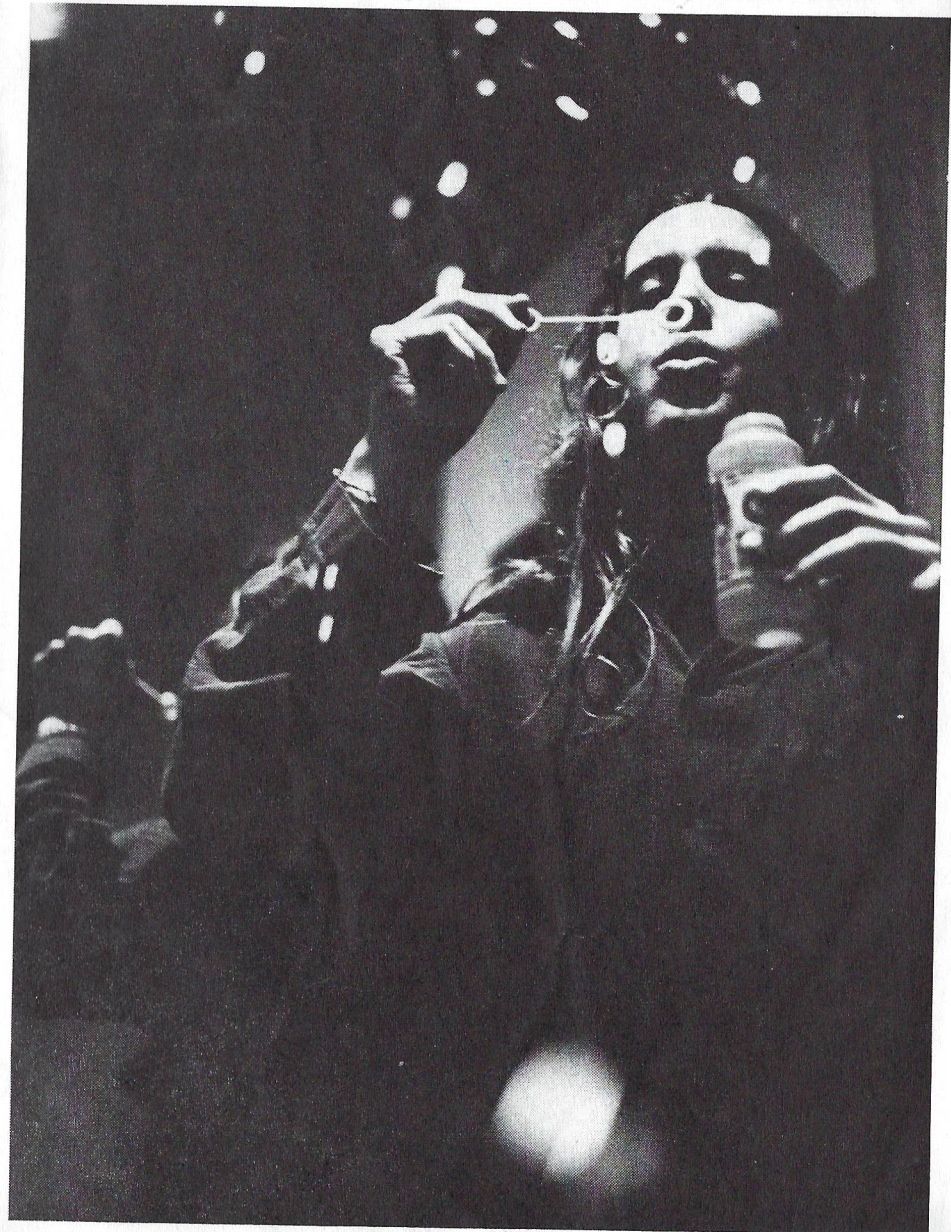
kxlu fm 88.9 presents

# Splatch

a magazine/program guide

volume 1 number 1

fall 1990

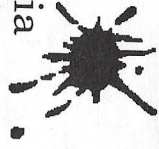


kxlu 88.9 fm

7101 w. 80th street

los angeles, california

90045





## from Colin with love

by Colin Bogart - kxlu general manager

THANK YOU! You made Fall Fundraiser 1990 a success! We raised \$55,000 in pledges, this with a new time of year and a shorter length. Thank you for your support. We had fun hosting fundraiser this fall. With all the food, Halloween decorations strewn everywhere, and the great bands who gave their time to play live, who wouldn't enjoy it? And of course, we're looking forward to a real vacation this winter. We'll recall past years when we had to put off playing with our new Christmas toys because we were busy asking listeners for money.

So what you have in your hands is a continuation of the new things (like this past

fundraiser) at KXLU. Okay, a program guide exactly new, but hey, at least the name is (apologies to Splat). "Spotch" is going to be issued on a regular basis. The goal is to provide you with a basic outline of our program schedule. A thicker, heavier, more verbose, and overall more complete guide will be forthcoming. And as with this issue, all of our generous (i.e., donating) listeners will receive future editions as soon they become available.

Note the sleek design and ultra light weight of "Spotch", which allows for easy transport. Read it on the bus, read at work during lunch, or position your mirror. Collect them all. Trade them with your friends. Enjoy!

## fine arts focus

with Nestor Pereira - fine arts coordinator

As a listener, you may have a general concept of what we broadcast. Well, we know that isn't enough. Unfortunately, financial and other mundane considerations have kept us from regularly printing a programme listing. Allow the present publication to give you a better idea of our schedule.

KXLU has a strong tradition of broadcasting Fine Arts/Classical programming. It has always manifested itself with uniqueness and vitality. Those of you that have listened with any consistency know that, at times, we may lack the *Teflon* smoothness of other broadcast giants. Yet, our desire to bring you an alternative cultural experience is both sincere and serious.

Our concentrated weekly schedule, running from six o'clock until eleven o'clock in the evening, provides a broad spectrum of material. We begin with the general "classical" offerings of the Early Evening Concert. Every succeeding segment is more exact in its focus:

Opera, Early Music, Organ, Piano, Twentieth Century, Irish, and more.

There are some uncommon programmes that deserve more description. For instance there is an entire programme of classical listener requests, Soiré Musicale, on Tuesday nights. Wednesday nights boast Nomadic Music. In this case, divergence designates the species. Also on Wednesdays, Trilogy and The Emancipation of the Dissonance bring to you the living, organic aspects of serious music (from the creators). Thursday nights end in "the realm of the senses," as aptly described in the title Sadayatana. This is the sphere of exotica, Musique Concrete and industrial music. The near future will bring an hour devoted to "Radio Theatre", Arts/Letters/Sciences, and original creative productions. But we offer more than I can profile in this cursory fashion.

On behalf of the students and other volunteers of our staff, I invite you to enjoy your *fine arts alternative*.

## d.j. profile

Cher 12pm-3pm tuesdays

Whether she's working on her third revision of a short story for an English class or attending yet another *Sizure Salad* show in the heart of Hollywood, KXLU's Cher is an exciting and highly stimulating person to know. It looks like L.A. will know Cher for a little longer as she's only a junior at Loyola Marymount U. Her major is English, where she is studying the critical aspects of both writing and reading.

Her position at the station is the often tense job of Club and Concerts Director. She's the person that makes sure you're "on the list" (plus one). Her weekly responsibilities include phoning promoters and being in touch with L.A. club owners to find out how the station can be involved in promoting shows. Usually this comes in the form of ticket giveaways or passes to upcoming events. Often times booking agents are not as generous as our public might expect, or a show is canceled at the last moment or special arrangements must be made for getting listeners to the venue. That's when Cher steps in, on the phone, on the air or by way of some kind of message, she'll get the word about what's where and when.

But Cher is so much more. She occupies Tuesday's "hot slot" from Noon to 3pm and plays many new releases as well as listener requests. Early Jesus and Mary Chain, My Life With The Thrill Kill Kult and Loop are among her favorite groups and her passion for Sonic Boom/Spacemen 3 projects is well known at KXLU. She attends live shows regularly or when school allows (and even many times when it doesn't), usually smokes a cigarette once a day with Music Director/Vampire Daniel Makegon and has raised some hell at English Acid with pal and Program Director Alexandra. I have no idea who the current "love of her life" is but you can always count on Cher for a smile or a kind word now and then. Hats off to you Cher!

She's a busy woman of the 90's with education firmly in control and an important position at KXLU. The station has benefited tremendously from her help and cheerful attitude and we think you, the listening audience will appreciate her effort on your behalf. So remember, the next time you win tickets or hear a fine set of music (between 12-3pm) you know it's Cher, in control, out of control and all over the place. God love ya Cher.

## rock record reviews

**COP SHOOT COP** "Consumer Revolt" LP (CIRCUIT)—From the ashes of the group Dig Dat Hole rose Cop Shoot Cop. It's battery and assault includes a very wierded out keyboard/sampling device (Jim Coleman, David Ouimet) matched with a high-end bass (Tod) and low-end bass (Natz) and the very noticeable drums and metal percussion of Phil Puleo. "Consumer Revolt" is one of those records that goes straight for the eyes with the poker so to speak; a political record devoid of "say so" policy or platform but heavy with sentiment. "Fire In The Hole" and "Down Come the Mickey" peel at the sordid world of NYC and beyond with slash-poetic and burn-intent lyric. Cop Shoot Cop function best because of their dichotomy between melody which acts subtly and the rhythm and vocals which are more

direct. A not-to-be-missed full length LP produced by Wharton Tiers and Martin Bisi. Write COP @ bx. 999 NY, NY 10003.

- Tomás

**ETERNAL** "Breathe" 7" (SARAH)—Sort of a different direction for this label after a handful of anorak guitar jewels; this time it's a Lush-esque /Mary-Chained beautiful fuzz combo. The three songs on this release have unique but thoroughly pop bass leads and incorporate tone, sustain and probably some e-bow for a deeply rich guitar drizzle. This little number will both surprise with cool melody and wash you over with woven sonic feedback gush. Recommended.

- Tomás



## kxlu rock programming

monday-friday 2am-6pm and saturday 3am-6am

monday    tuesday    wednesday    thursday    friday

2 to 6am	Eric the Viking	Carrie	David G.	Mort	Matt M.
6 to 9am	Mimi	Ara	Greg J.	Alan E. Rapp	Pat D.
9am to 12 pm	Robert D.	Alexandra	Joe	Steve and Tomás	Cheap Heroin
12 to 3pm	Buford	Cher	Grover	Scott the Astronaut	Damion
3 to 6pm	Dr. Phil Pheelgood	Skippy	Greg Brawnson	Colin Sicc	Pete and Daniel

## kxlu fine arts programming

monday-friday 6pm-11pm

monday    tuesday    wednesday    thursday    friday

6pm	The Early Evening Concert				
7pm	Monday Night at the Opera Katherine Free	Vocal Scene	Nomadic Music Robert Rioux	Early-Music Mark Born	Piano World
8pm		Soiré Musicale Yolanda S.		Twentieth Century Ltd. Phil Conrad	Age of the Organ René Marceau
9pm	?		Trilogy Rodney Oakes, Bonnie Barnett & Ross Whitney	New Dimensions Heinrich Zimmer	Audiophile Audition
10pm		?	Emancipation of the Dissonance Heinrich Zimmer & Greg Jahiel	Sadayatana Todd Williams	Irish Beat Michelle Meena

## kxlu weekday specialty shows

	monday	tuesday	wednesday	thursday	friday
11pm	Another State of Mind Pete Giberga & Scott the Astronaut	The Molotov Cocktail Hour Cyrano & Señor Amor	Skankshaft Neil Synepherine & Uncle Tim	Surfwave Jim Dunfrund	Stray Pop  Stella <i>(until 3am)</i>
12am	12:30am Super Twin Hours of Soul Fred C. Soul	Psychotechnics Michael B© & Damion	Bluez Hotel Papa John & Grover	The Head Shop John Valenzuela	
1am					

## news and other miscellany

	monday	tuesday	wednesday	thursday	friday
12pm-12:15pm	The High Noon News and The In-Towne Report				
5pm-5:05pm	The In-Towne Report				
5:05pm-5:50pm	Happy Hour - All Requests				
5:50pm-6pm	The 5:50 News				
11pm-11:10pm	The 11:00 News				

## kxlu weekends

	saturday	sunday
3am-6am	Alternative Rock Programming	Jazz Night Flight
6am-6pm	Alma Del Barrio	
6pm	Groove Time Big Red	Demolisten Sandy & Dot
7pm	Reggae Music Forward Tomás	Brain Cookies Splat Winger
8pm	We Came From Beyond Mike N.	
9pm		Alien Air Music Pat Murphy
10pm		Alternative Outlook Paul Viskanta
11pm	Jazz Night Flight	
12am		The Illicit Groove Jason Bentley
1am		Alternative Rock Programming
2am		